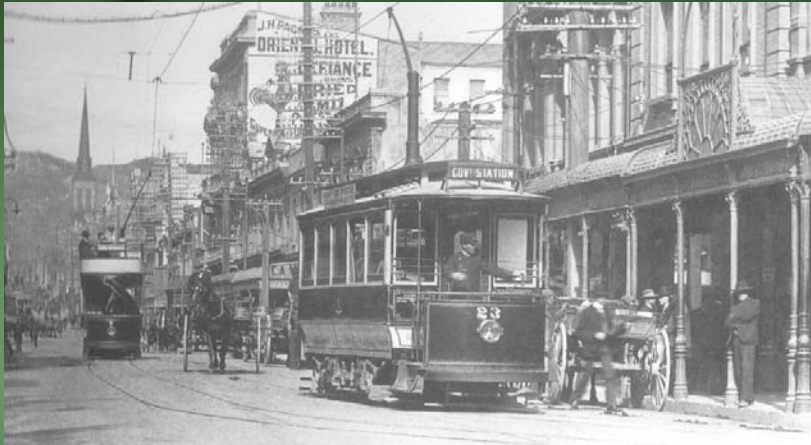


The 100% electric commute ...



... a once and future option



\$210m rail job gets 'go'
OP 13/11/07



KERRY WILLIAMSON

A LONG-AWAITED \$210 million deal for new electric trains will be signed today, just as commuter numbers using Wellington's rail network hit record highs.

Greater Wellington regional council is due to sign a contract this afternoon with two companies to build and deliver 70 new electric multiple trains.

Korea's Rotem Company and Mitsui & Co of Japan will develop new trains for Wellington's commuter lines from 2010.

The region's rail network saw more than 11,175,000 passenger trips in the past year, the most in at least a decade, according to council figures issued this month.

Work has already begun on preparing commuter lines for the new trains, specifically designed for the network.

About \$180 million is earmarked measures to increase capacity, including building some new stations and upgrading existing facilities.

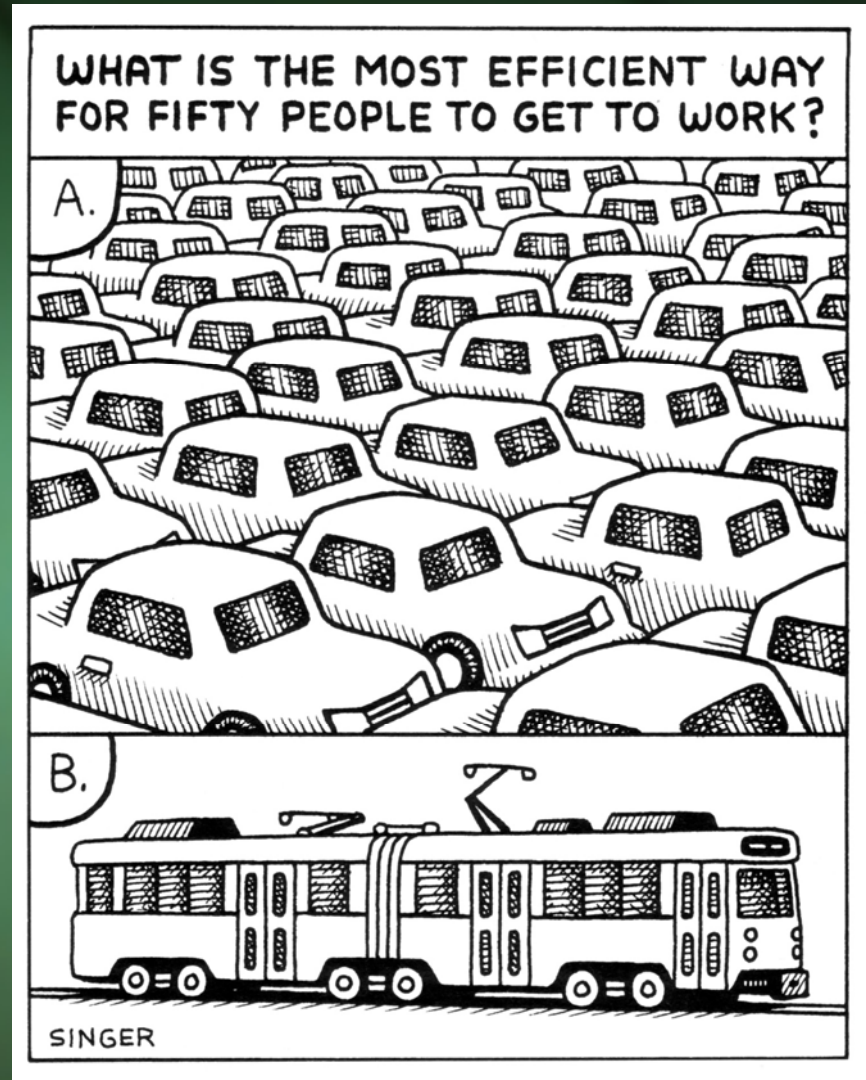
The new trains, pictured, will be the first for Wellington's commuter

10-year contract to rebuild its fleet of electric trolley buses.

Regional council statistics show

PT important for

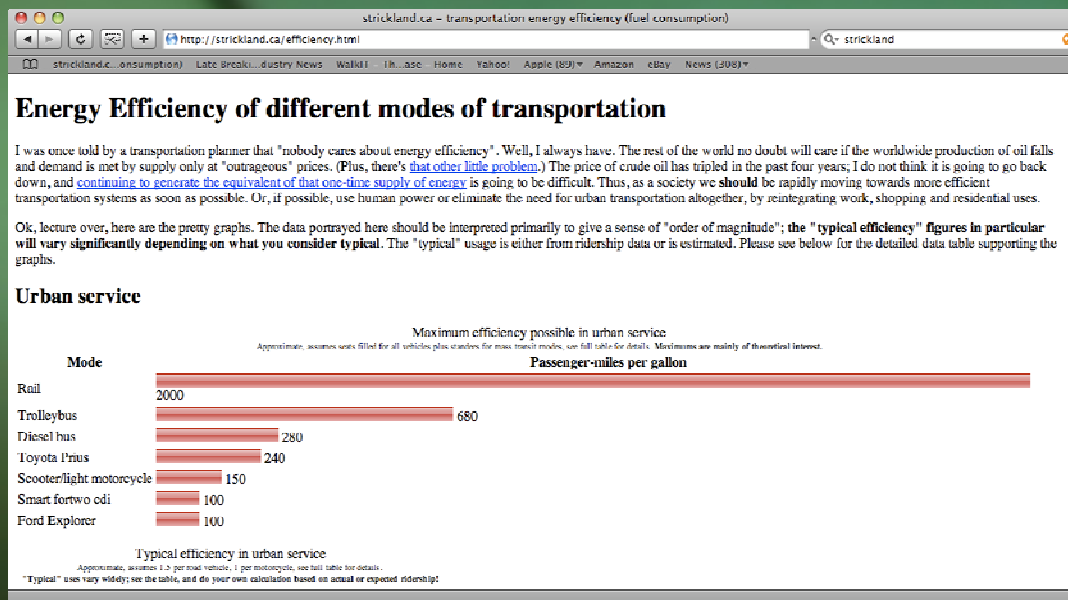
- social equity
- decongestion
- urban mobility & economic efficiency
- liveable cities
- complements walking & cycling
- An available and immediate way to reduce GHGs



Why electric?

- Electric PT attracts more ex-motorists (10% - 100% increase over diesel buses)
- Even if near-empty, electric PT is zero-emission (assuming renewable electricity)

Renewable electricity supplied to electric vehicles via overhead wires is the most efficient and zero-emission powered transport there is ...



www.strickland.ca/efficiency.html

But best of all ...

Electric transit is

HERE NOW!



West Croydon 2

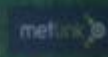
SI

From towards Croydon



COMING SOON

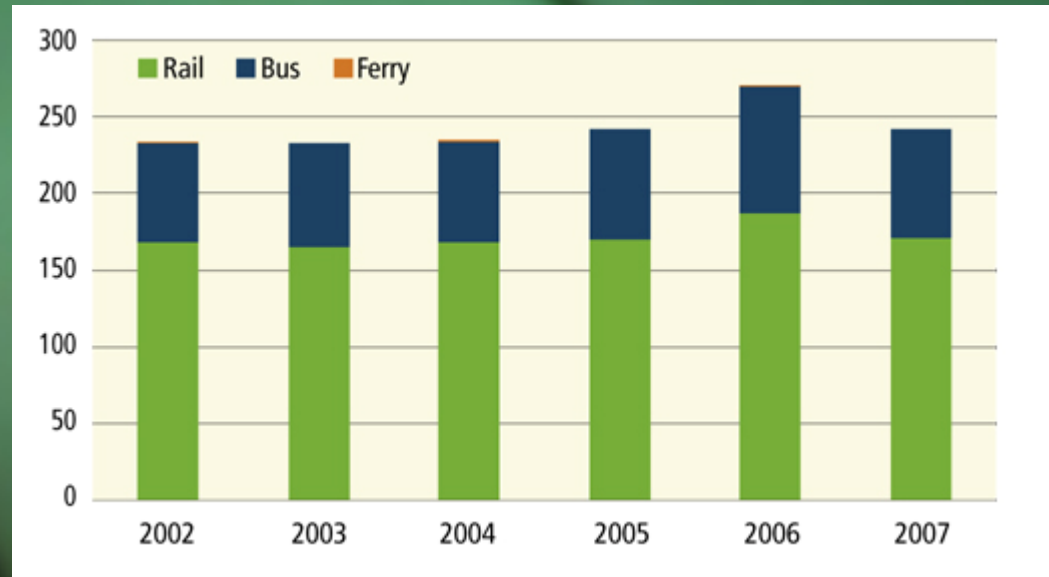
A Convenient Truth Wellington Electric Buses



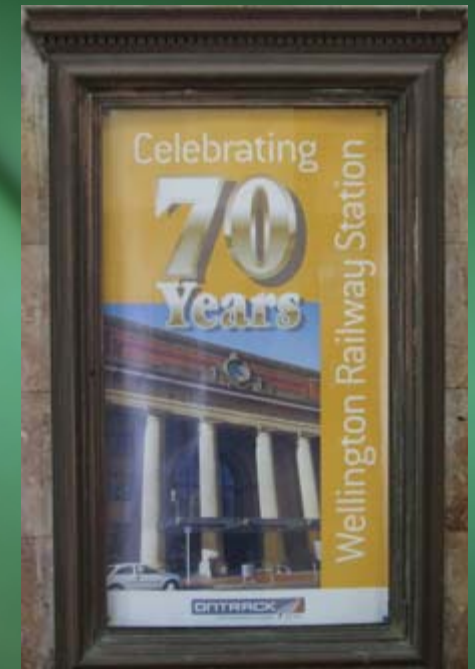
BEGINS

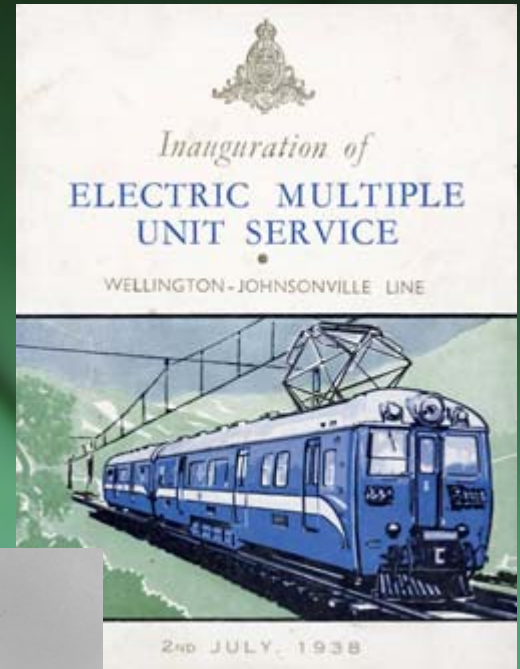
Electric PT rules OK!

- 70% of pgr kms on rail
- + ?% by trolleybus & cable car
- PT = approx 3/4 electric



1925 - 1955 - the big rail build

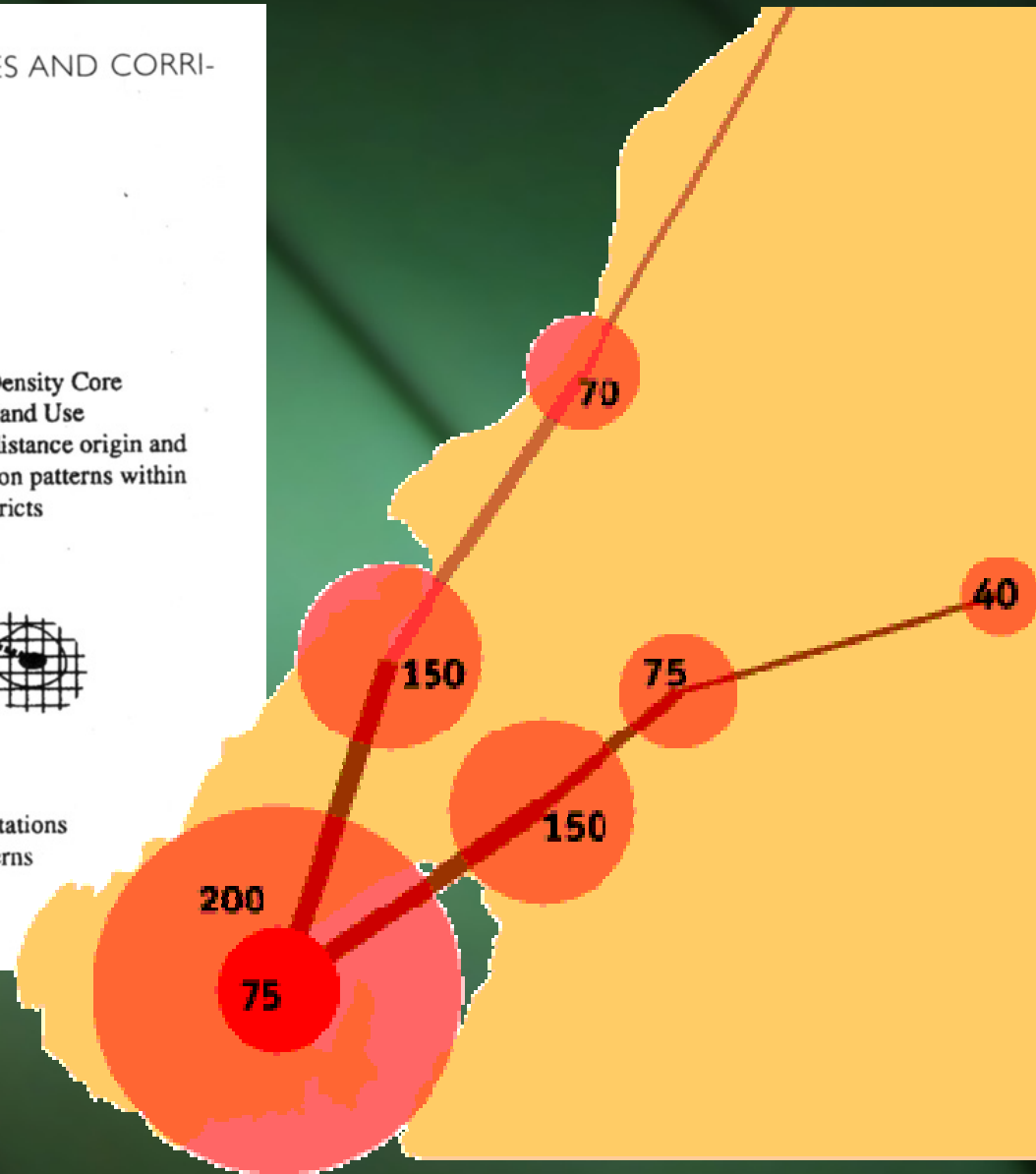
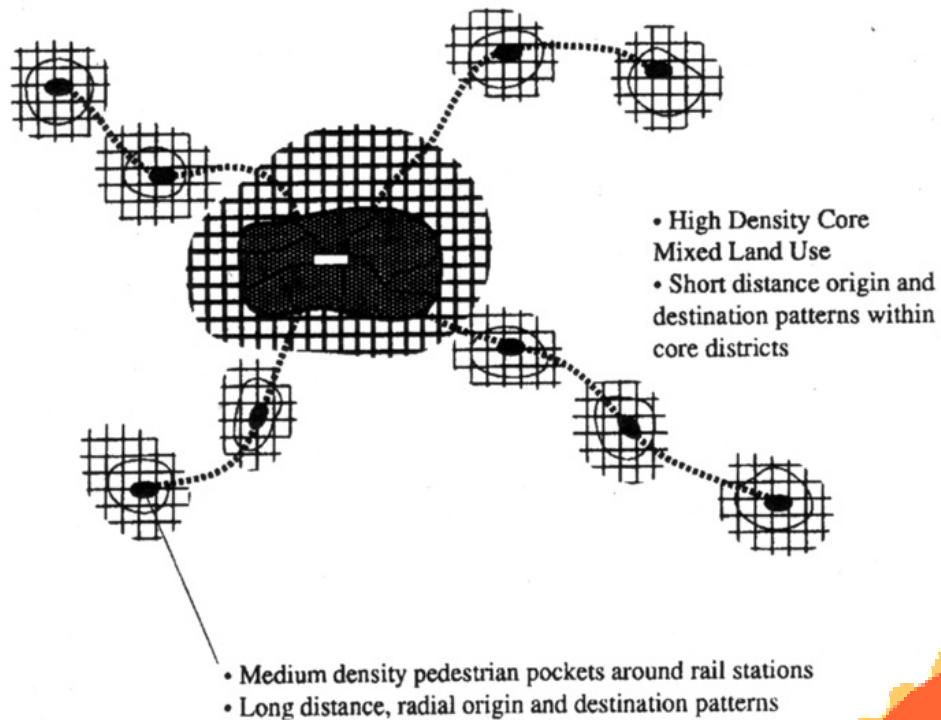




Wellington's head start

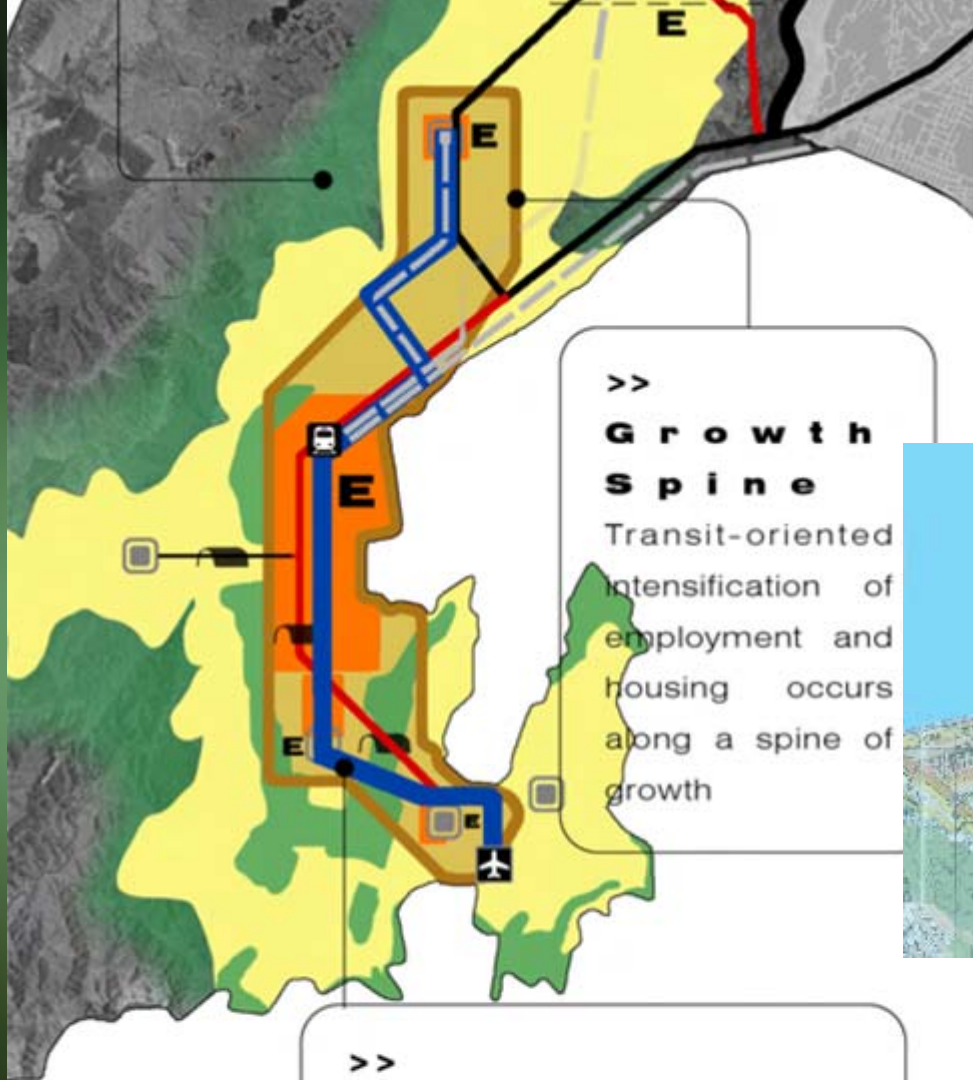
FIGURE 7.3

INTEGRATED TRANSPORT AND LAND USE — NODES AND CORRIDORS (SOURCE ZEIBOTS, 1994)



Strong CBD





>>

G r o w t h S p i n e

Transit-oriented intensification of employment and housing occurs along a spine of growth

>>

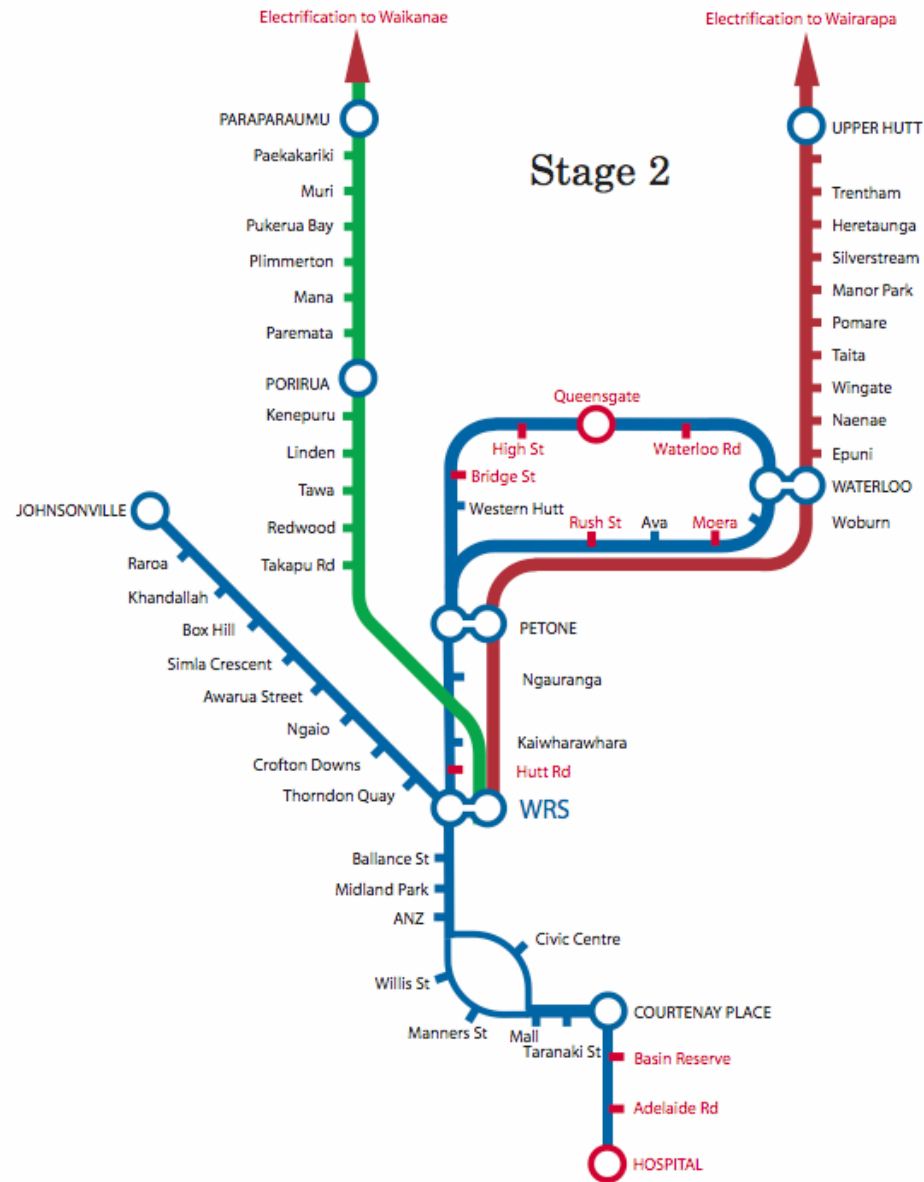
T r a n s p o r t

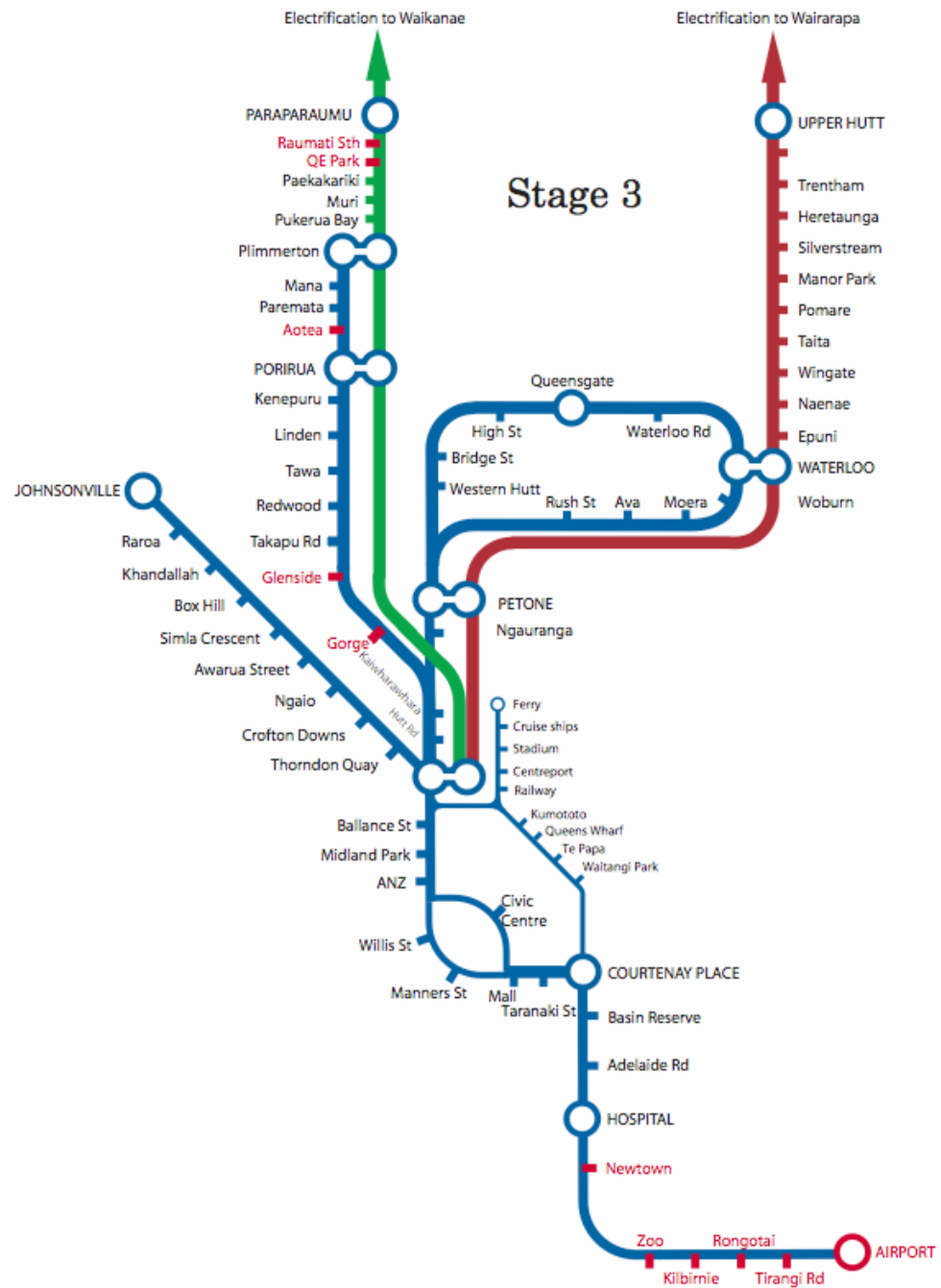
High-quality public transport and improved roading is provided with greatest investments along the spine of growth + new Hutt Valley-SH1 link













Shanghai super-capacitor bus

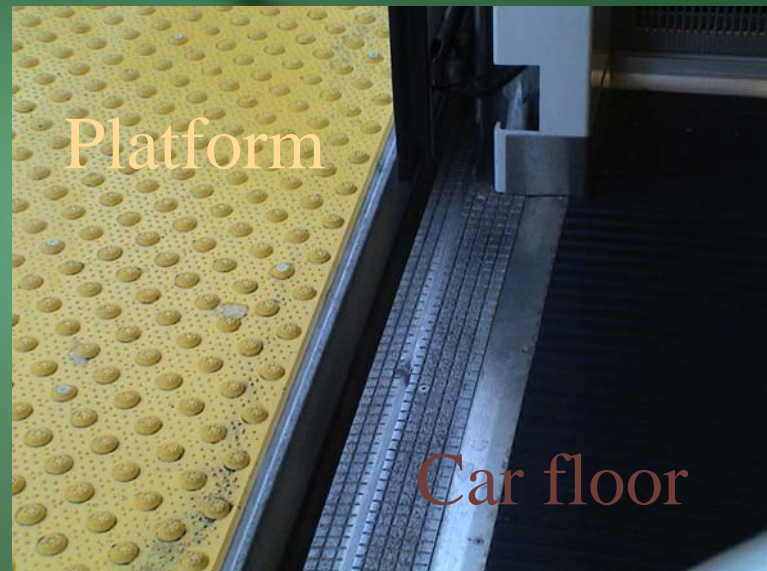


Super- capacitor bus charging at a stop



Integration of modes

Level boarding
helps integration



Bikes on board



Bikes stored



Roll on, roll off



Tram - train



Trams in streets



Trams on lawns



Trams in malls



Trams indoors





© Harald A. Jahn / www.tramway.at

Trams and bus lanes



Integrating the electric bike



Electric park + ride

CAR TECH

Britain Gets First On-Street Electric Car Chargers

by Staff Writers

London (AFP) Dec 06, 2006

Britain's first on-street charging points for electric cars were unveiled Wednesday in central London as part of a wider bid to encourage drivers to ditch gas-guzzling vehicles. The City of Westminster, which has the highest levels of air pollution in the kingdom, launched the power points in Wellington Street and Southampton Street in the Covent Garden entertainment district.

Electric cars are exempt from London's congestion charge, which costs drivers of other vehicles eight pounds (16 dollars, 12 euros) per day to enter the city centre.



London Mayor Ken Livingstone has voiced plans to ramp up the congestion charge to 25 pounds for gas-guzzling 4x4s and the city's well-heeled southwest borough of Richmond has mooted plans to charge far higher parking rates for such vehicles.





On 6 Nov 2007 the residents of Charlotte, North Carolina, voted 70% for extra taxes to expand light rail beyond the soon-to-open first line.